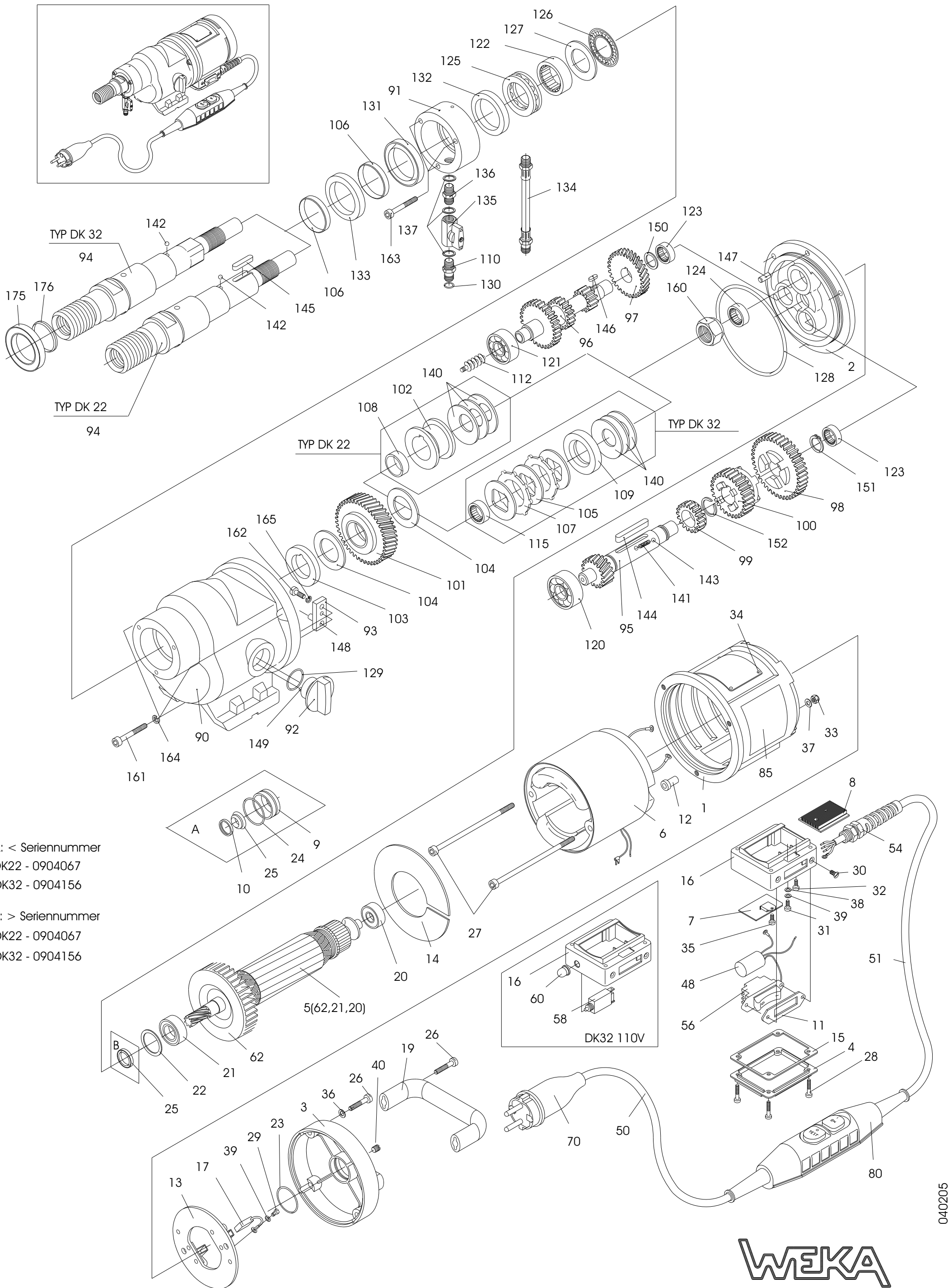


DIAMANT - KERNBOHRMASCHINE TYP DK 22 (L,S), DK 32



A: < Seriennummer
DK22 - 0904067
DK32 - 0904156

B: > Seriennummer
DK22 - 0904067
DK32 - 0904156

Spare Parts List Diamond Core Drill Type DK 22 (L/S), DK32

EE-DK2-3 101106

FIG NO	DESCRIPTION	PART No. DK 32	PART No. DK 22(32)	FIG NO	DESCRIPTION	PART No. DK 32	PART No. DK 22(32)
1	1	Motorcase	DK20101	90	1	Gear Box	DK30201
2	1	Intermediate Flange	DK30102-1	91	1	Water Supply Bush	DK20202
3	1	Motor Top Hood	DK20103	92	1	Gear Change Grip	DK20203
4	1	Terminal Case Cover	DK20106	93	1	Gear Change Lever	DK30205
5	1	Armature with Fan and Bearings 230V	DK30108-1	94	1	Drilling Spindle	DK30206
	1	Armature with Fan and Bearings 110V	DK20108-1		1	Drilling Spindle	DK20206.4
	1	Field compl. 230V	DK30109		1	Drilling Spindle	DK20206.3
6	1	Field compl. 110V	DK30109/11	95	1	Gear Change Shaft	DK30207
	1	Electronic Module 230V	DK20109/11		1	Gear Change Shaft DK22L	DK20207
7	1	Electronic Module 110V	DK30510		1	Gear Change Shaft	DK20207S
	1	Cooling Profile	DK20510	96	1	Pinion Shaft	DK20207
8	1	Switch Sealing	DK20510/11		1	Spur Wheel	DK30208
11	1	Field Screw Insulating Sleeve	DK30140	97	1	Gear Wheel 1	DK20208
12	2	Brush Holder Disk	DK20116	98	1	Gear Wheel 3	DK30209
13	1	Air Conducting Disk	DK20117	99	1	Slide Gear Wheel	DK20212
14	1	Terminal Case Sealing	DK20118	100	1	Spindle Wheel	DK30213
15	1	Terminal Case 230V	DK40122	101	1	Spindle Wheel	DK20214
16	1	Terminal Case 110V	DK30130		1	Spindle Wheel	DK30215
16	1	Terminal Case for Motor Protection Switch 230V	DK30131	102	1	Pressure Shell DK22	DK20215L
	1	Terminal Case for Motor Protection Switch 110V	DK20130	103	1	Supporting Disk	DK40215S
	1	Carbon Brush	DK20125	104	2	Supporting Disk DK22S	DK20216
17	2	Carbon Brush 110V	DK20125/11	105	3	Brake Disk	DK20217
19	1	Carrying Handle	DK30105	106	2	Pressure Disk	DK40217
20	1	Ball Bearing	6062012	107	2	Shaft Wearing Sleeve	DK30218
21	1	Ball Bearing	6060021	108	2	Brake Disk B	DK30219
22	1	Compensation Washer	2632201	109	1	Bearing Socket	DK20210
23	1	O-Ring	4532003	110	1	Pressure Ring	DK30221
25	1	Rotary Shaft Seal	5012247	112	1	Quick Connect Nipple	DK20220
26	6	Hex. Socket Head Screw	0106035	115	1	Feed Worm	DK30216
27	2	Hex. Socket Head Screw	0105120	120	1	Needle Cage	SR30230
28	4	Fill. Head Screw	0204040	121	1	Needle Cage	6326130
29	2	Fill. Head Screw	0204006	122	1	Ball Bearing	6063020
30	2	Slot. Count. Head Screw	0414006	123	2	Ball Bearing	6062010
31	1	Slot. Pan Head Screw	0304006	124	1	Needle Bearing	6330200
32	1	Pan Head Tapping Screw	0539095	125	1	Needle Bush	6314120
33	2	Hexagon Nut	1005000	126	1	Needle Bush	6320160
34	4	Round Head grooved Pin	2223004	127	1	Thrust Ball Bearing	6551106
35	1	Thread Roll. Head Screw M4x6	0504006	128	1	Thrust Needle Bearing	6530470
36	4	Locking Washer	1806000	129	1	Thrust Needle Bearing	6530471
37	2	Curved Spring Washer	1805137	130	1	O-Ring	5510203
38	1	Curved Spring Washer	1804137	131	1	O-Ring	5520003
39	3	Medium Washer	1804433	132	1	O-Ring	5511025
40	1	Slot. Set Screw	0706005	133	1	Rotary Shaft Seal	5040527
48	1	Int. Suppr. Capacitor	DK20133	134	1	Rotary Shaft Seal	5038507
50	1	Cord (for PRCD 230V)	8715152	135	1	Rotary Shaft Seal	5040521
51	1	Cord (for PRCD 230V)	8723152	136	1	Ball Valve	7014001
	1	Cord AWG 16	8738152	137	1	Grip for Ball Valve	7014005
	1	Cord AWG 14 DK32 -110V	8738254	138	1	Douple Nipple	7014002
54	1	Cord Gland 230V	8804020	139	3	Sealing Ring	7014003
	1	Cord Gland 110V	8804020	140	3	Disk Spring	4045224
56	1	Motor Switch	8023005	141	1	Pressure Spring	4305235
58	1	Motor Prot. Switch 110V	8057030	142	1	Ball	2205000
60	1	Protective Hood 110V	8038002	143	2	Ball	2204000
62	1	Fan	DK20105	144	1	Parallel Key	3006045
70	1	Mains Plug (for PRCD) 230V	8016013	145	1	Parallel Key	3006030
	1	Mains Plug (CEE 16A 4h)	8016004	146	1	Parallel Key	3004010
80	1	PRCD Inline Protector 230V	8400030	147	1	Parallel Pin	2506010
	1	PRCD Inline Protector 110V	8400130	148	1	Parallel Pin	2505015
85	1	Pointing Sticker	DK20620	149	1	Parallel Pin	2503016
				150	1	Shim Ring	1914201
				151	1	Retaining Ring	3516001
				152	1	Retaining Ring	3620000
				160	1	Hexagon Nut	1022015
				161	3	Hex. Soc. Head Screw	0106050
				162	1	Hex. Soc. Head Screw	0105012
				163	3	Hex. Soc. Head Screw	0105045
				164	3	Locking Washer	1806000
				165	1	Locking Washer	1805000
					1	Gear Oil	9030001
				175	1	Antifriction-Element DK32	AE35
				176	2	O-Ring	5532015

Please specify in case of spare part orders:
Machine No., Quantity, Description, Part No. and by electrical parts the voltage.

WEKA Elektrowerkzeuge, Auf der Höhe 20, D 75387
Neubulach, Germany
Telephone: +49 7053 96816-0 · Telefax: +49 7053 3138
Internet: <http://www.weka-elektrowerkzeuge.de>
Email: weka@weka-elektrowerkzeuge.de