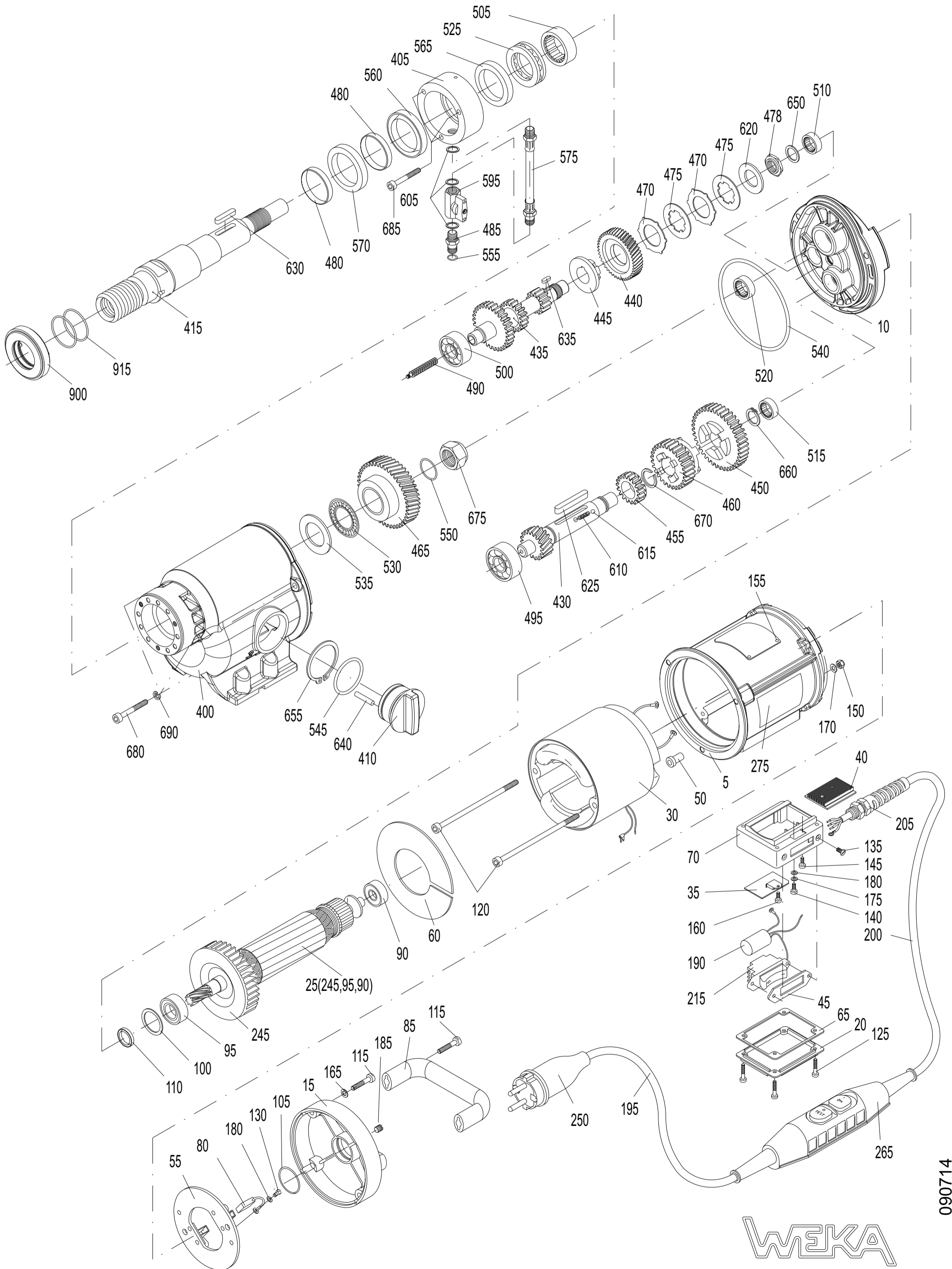


DIAMANT - KERNBOHRMASCHINE TYP DK 26, DK 28
 DIAMOND - CORE DRILL TYPE DK 26, DK 28



WEKA

090714

Spare Parts Price List

Diamond Core Drill Type DK 26/28 - Motor

EPE-DK26-28 080318

Page 1/2

FIG	NO	DESCRIPTION	STANDARD	TYPE	PART NO	PRICE €
5	1	Motor case			DK30101	94,78
10	1	Intermediate Flange with O-Ring			DK26102C	66,97
15	1	Motor Top Hood with O-Ring			DK30103C	35,03
20	1	Terminal Case Cover			DK20106	7,91
25	1	Armature with Fan and Bearings	230V	DK26	DK26108-1	170,66
	1	Armature with Fan and Bearings	110V	DK26	DK26108/11	170,66
	1	Armature with Fan and Bearings	230V	DK28	DK28108	170,66
	1	Armature with Fan and Bearings	110V	DK28	DK28108/11	170,66
30	1	Field compl.	230V	DK26	DK26109	97,45
	1	Field compl.	110V	DK26	DK26109/11	97,45
	1	Field compl.	230V	DK28	DK28109	97,45
	1	Field compl.	110V	DK28	DK28109/11	97,45
35	1	Electronic Module	230V	DK26	DK26510-1	40,69
	1	Electronic Module	110V	DK26	DK26510/11-1	41,73
	1	Electronic Module	230V	DK28	DK28510-1	40,69
	1	Electronic Module	110V	DK28	DK28510/11-1	41,73
40	1	Cooling Profile			DK30140	7,72
	1*	Exchange Seal Bush with O-Ring			DK20113-1C	6,38
45	1	Switch Sealing			DK20121	1,85
50	2	Field Screw Insulating Sleeve			DK20116	2,21
55	1	Brush Holder Disc			DK20117	20,02
60	1	Air Conducting Disc			DK20118	1,96
65	1	Terminal Case Sealing			DK40122	1,11
70	1	Terminal Case for motor electronic 230V			DK30130	12,67
	1	Terminal Case for motor electronic 110V			DK30131	12,67
80	2	Carbon Brush	230V		DK20125	4,48
	2	Carbon Brush	110V		DK20125/11	4,48
85	1	Carrying Handle			DK30105	5,16
90	1	Ball Bearing	6201 2Z		6062012	6,74
95	1	Ball Bearing	6002 Z Special		6060021	7,11
100	1	Compensation Washer			2632201	0,72
105	1	O-Ring	RDR 32x3		4532003	0,53
110	1	Rotary Shaft Seal	RWD12x24x7		5012247	5,46
115	6	Hex. Socket Head Screw	M6x35		0106035	0,26
120	2	Hex. Socket Head Screw	M5x120		0105120	1,85
125	4	Fill. Head Screw	M4x40		0204040	0,26
130	2	Fill. Head Screw	M4x6		0204006	0,15
135	2	Slot. Count. Head Screw	M4x6		0414006	0,15
140	1	Slot. Pan Head Screw	M4x6		0304006	0,15
145	1	Pan Head Tapping Screw	C 3,9x9,5		0539295	0,15
150	2	Hexagon Nut	M5		1005000	0,10
155	4	Round Head grooved Pin	2,3x4		2223004	0,10
160	1	Hexagon Socket Head Screw	M4x6		0104006	0,15
	1*	Th. Roll. Cheese Head Screw	M4x6		0504006	0,20
165	4	Locking Washer	SM6		1806000	0,05
170	2	Curved Spring Washer	A5		1805137	0,05
175	1	Curved Spring Washer	A4		1804137	0,05
180	3	Medium Washer	4,3		1804433	0,05
185	1	Slot. Set Screw	M6x5		0706005	0,15
190	1	Int. Suppr. Capacitor			DK20133-1	4,94
195	1	Cord 3G1,5x1,5m	PRCD 230V		8715152	12,36
200	1	Cord 3G1,5x2,3m	PRCD 230V		8723152	15,46
	1	Cord 3G1,5x3,8	230V		8738152	21,64
	1	Cord 3G4x3,8m	110V		8738043	16,86
205	1	Cord Gland			8804020	2,88
215	1	Motor Switch			8023005	22,13
245	1	Fan			DK20105	7,38
250	1	Mains Plug (for PRCD)	Schuko		8016013	11,67
	1	Mains Plug GB	CEE 32A 4h		8032004	13,60
265	1	PRCD Inline Protector	230V		8400030	71,09

	1	PRCD Inline Protector	110V		8400130	71,09
275	1	Pointing Sticker			DK20620	1,76

Spare Parts Price List Diamond Core Drill Type DK 26/28 - Gear

Page 2/2

FIG	NO	DESCRIPTION	STANDARD	TYPE	PART NO	PRICE €
400	1	Gear Box			DK26201	139,09
405	1	Water Supply Bush			DK20202	24,23
410	1	Gear Change Grip with Fig. 545, 640			SR70203C	25,34
415	1	Drill Spindle 1 1/4" UNC with Fig. 480			DK26206C	100,96
430	1	Gear Change Shaft		DK26	DK20207	61,63
	1	Gear Change Shaft		DK28, DK26L	DK30207	64,27
	1	Gear Change Shaft		DK26S	DK20207S	66,89
435	1	Pinion Shaft			SR30208-1	87,57
440	1	Spur Wheel			SR30209	26,79
445	1	Bearing Bush			SR30221	11,34
450	1	Gear Wheel 1			DK30212	46,34
455	1	Gear Wheel 3			DK30213	33,71
460	1	Slide Gear Wheel			DK30214	60,05
465	1	Spindle Wheel		DK26	SR30215S	36,06
	1	Spindle Wheel		DK28, DK26L	SR30215	36,06
	1	Spindle Wheel		DK26S	SR30215HS	36,06
470	2	Brake Disk			SR30218	4,64
475	2	Pressure Disk			SR30219	6,49
478	1	Hexagon Nut			SR30220-2	4,64
480	2	Shaft Wearing Sleeve			DK20210	3,95
485	1	Quick Connect Nipple with O-Ring			DK20225	5,68
490	1	Feed Worm			SR30230	7,62
495	1	Ball Bearing	6302		6063020	7,72
500	1	Ball Bearing	6201		6062010	8,53
505	1	Needle Bearing			6330200	25,28
510	1	Needle Bush	BK1412		6314121	7,72
515	1	Needle Bush	HK1412		6314120	6,11
520	1	Needle Bush	HK2016		6320160	7,48
525	1	Thrust Ball Bearing			6551106	20,28
530	1	Thrust Needle Cage			6530470	4,84
535	1	Thrust Bearing Washer			6530471	1,63
540	1	O-Ring	RDR110x3		5511003	1,06
545	1	O-Ring	RDR36x3		5536003	0,30
550	1	O-Ring	RDR20x3		5020003	0,26
555	1	O-Ring	RDR11x2,5		5511025	0,26
560	1	Rotary Shaft Seal	40x52x7		5040527	5,27
565	1	Rotary Shaft Seal	38x50x7		5038507	5,27
570	1	Rotary Shaft Seal	40x52x7S		5040521	5,27
575	1	Hose Piece cpl. w. nipples			DK30235	12,12
595	1	Ball Valve			7014001	8,12
605	3	Sealing Ring			7014003	0,15
610	1	Pressure Spring			4305235	0,63
143	2	Ball	4		2204000	0,20
620	1	Disk Spring	31,5x16,3x2		4031162	0,81
625	1	Parallel Key	A6x6x45		3006045	0,53
630	1	Parallel Key	A5x5x25		3005025	0,42
635	1	Parallel Key	A4x4x10		3004010	0,31
640	1	Parallel Pin	5m6x25		2505025	0,92
650	1	Shim Ring	PS14x20x1		1914201	0,26
655	1	Retaining Ring	42x1,75		3542175	1,29
660	1	Retaining Ring	16x1		3516001	0,20
670	1	Retaining Ring	SW20		3620000	0,20
675	1	Hexagon Nut	M22x1,5		SR30226	5,66
680	3	Hex. Soc. Head Screw	M6x50		0106050	0,31
685	3	Hex. Soc. Head Screw	M5x45		0105045	0,38
690	3	Locking Washer	SM6		1806000	0,05
	1	Gear Oil	300 ml		9030001	3,97
900	1	Antifriction Element			AE35	39,08
915	2	O-Ring	32x1,5		5532015	0,31

* parts are substituted

Please specify in case of spare part orders:
Machine No., Quantity, Description, Part No. and for electrical parts the voltage.

WEKA Elektrowerkzeuge e.K., Auf der Höhe 20, D 75387 Neubulach - Altbulach
Telephone: +49 7053 96816-0, Telefax: +49 7053 3138

Internet: <http://www.weka-elektrowerkzeuge.de> · E-mail: weka@weka-elektrowerkzeuge.de

Subject to change without notice